

检测报告 Test Report

报告编号 SCL01I00495202E
Report No. SCL01I00495202E

第 1 页 共 8 页
Page 1 of 8

申请单位 广州市鸿利光电股份有限公司
Applicant GUANGZHOU HONGLI OPTO-ELECTRONIC CO.,LTD.
地址 广州市花都区花东镇先科一路 1 号
Address NO.1 XIANKE YI ROAD,HUADONG TOWN,HUADU DISTRICT,
GUANGZHOU,CHINA.

以下测试之样品及样品信息由申请者提供并确认

The following sample(s) and sample information was/were submitted and identified by/on the behalf of the client

样品名称 HIGH POWER LED E
Sample Name HIGH POWER LED E
样品接收日期 2016.01.19
Sample Received Date Jan. 19, 2016
样品检测日期 2016.01.19-2016.01.26
Testing Period Jan. 19, 2016 to Jan. 26, 2016

检测要求 请参见下页。
Test Requested Please refer to the following page(s).

检测依据/检测结果 请参见下页。
Test Method/Test Result(s) Please refer to the following page(s).

主 检
Tested by

刘少蔚

审 核
Reviewed by

夏建

批准
Approved by

刘少蔚

日 期
Date

2016.01.26

刘少蔚

技术经理 Technical Manager

No. R177730356

华测检测认证集团股份有限公司
Centre Testing International Group Co.,Ltd.

广东省深圳市宝安区 70 区鸿威工业园

Hongwei Industrial Zone, Bao'an 70 District, Shenzhen, Guangdong, China

检测报告

Test Report

报告编号 SCL01I00495202E
Report No. SCL01I00495202E

第 2 页 共 8 页
Page 2 of 8

检测要求 根据客户要求, 对所提交样品中的铅(Pb), 镉(Cd), 汞(Hg), 六价铬(Cr(VI)), 多溴联苯(PBBs), 多溴二苯醚(PBDEs), 邻苯二甲酸酯(DBP, BBP, DEHP, DIBP)进行测试。

Test Requested As specified by client, to test Lead(Pb), Cadmium(Cd), Mercury(Hg), Hexavalent Chromium(Cr(VI)), Polybrominated Biphenyls(PBBs), Polybrominated Diphenyl Ethers(PBDEs), Phthalates (DBP, BBP, DEHP, DIBP) in the submitted sample(s).

检测依据 Test Method

测试项目 Tested Item(s)	测试方法 Test Method	测试仪器 Measured Equipment(s)
铅 Lead (Pb)	IEC 62321-5:2013 Ed.1.0	ICP-OES
镉 Cadmium (Cd)	IEC 62321-5:2013 Ed.1.0	ICP-OES
汞 Mercury (Hg)	IEC 62321-4:2013 Ed.1.0	ICP-OES
六价铬 Hexavalent Chromium (Cr(VI))	IEC 62321:2008 Ed.1 Annex C	UV-Vis
	IEC 62321-7-1:2015	
多溴联苯 Polybrominated Biphenyls (PBBs)	IEC 62321-6:2015	GC-MS
多溴二苯醚 Polybrominated Diphenyl Ethers (PBDEs)	IEC 62321-6:2015	GC-MS
邻苯二甲酸酯 Phthalates (DBP, BBP, DEHP, DIBP)	参考 EN 14372:2004(E) Refer to EN 14372:2004(E)	GC-MS

检测报告
Test Report报告编号 SCL01I00495202E
Report No. SCL01I00495202E第 3 页 共 8 页
Page 3 of 8

检测结果 Test Result(s)

测试项目 Tested Item(s)	结果 Result		方法检出限 MDL
	(1)	(2)	
铅 Lead (Pb)	15 mg/kg	N.D.	2 mg/kg
镉 Cadmium (Cd)	N.D.	N.D.	2 mg/kg
汞 Mercury (Hg)	N.D.	N.D.	2 mg/kg
六价铬 Hexavalent Chromium (Cr(VI))	---	N.D.	2 mg/kg
	N.D. (阴性) (Negative)	---	0.02µg/cm ²

测试项目 Tested Item(s)	结果 Result		方法检出限 MDL
	(2)		
多溴联苯 Polybrominated Biphenyls(PBBs)			
一溴联苯 Monobromobiphenyl	N.D.		5 mg/kg
二溴联苯 Dibromobiphenyl	N.D.		5 mg/kg
三溴联苯 Tribromobiphenyl	N.D.		5 mg/kg
四溴联苯 Tetrabromobiphenyl	N.D.		5 mg/kg
五溴联苯 Pentabromobiphenyl	N.D.		5 mg/kg
六溴联苯 Hexabromobiphenyl	N.D.		5 mg/kg
七溴联苯 Heptabromobiphenyl	N.D.		5 mg/kg
八溴联苯 Octabromobiphenyl	N.D.		5 mg/kg
九溴联苯 Nonabromobiphenyl	N.D.		5 mg/kg
十溴联苯 Decabromobiphenyl	N.D.		5 mg/kg
多溴二苯醚 Polybrominated Diphenyl Ethers(PBDEs)			
一溴二苯醚 Monobromodiphenyl ether	N.D.		5 mg/kg
二溴二苯醚 Dibromodiphenyl ether	N.D.		5 mg/kg
三溴二苯醚 Tribromodiphenyl ether	N.D.		5 mg/kg
四溴二苯醚 Tetrabromodiphenyl ether	N.D.		5 mg/kg
五溴二苯醚 Pentabromodiphenyl ether	N.D.		5 mg/kg
六溴二苯醚 Hexabromodiphenyl ether	N.D.		5 mg/kg
七溴二苯醚 Heptabromodiphenyl ether	N.D.		5 mg/kg
八溴二苯醚 Octabromodiphenyl ether	N.D.		5 mg/kg
九溴二苯醚 Nonabromodiphenyl ether	N.D.		5 mg/kg
十溴二苯醚 Decabromodiphenyl ether	N.D.		5 mg/kg

检测报告
Test Report

报告编号 SCL01I00495202E
Report No. SCL01I00495202E

第 4 页 共 8 页
Page 4 of 8

检测结果 Test Result(s)

测试项目 Tested Item(s)	结果 Result	方法检出限
	(2)	MDL
邻苯二甲酸酯 Phthalates		
邻苯二甲酸二正丁酯 Dibutyl phthalate(DBP) CAS#:84-74-2	N.D.	50 mg/kg
邻苯二甲酸丁基苄酯 Benzylbutyl phthalate(BBP) CAS#:85-68-7	N.D.	50 mg/kg
邻苯二甲酸(2-乙基己基)酯 Di-2-ethylhexyl phthalate(DEHP) CAS#:117-81-7	N.D.	50 mg/kg
邻苯二甲酸二异丁酯 Diisobutyl phthalate(DIBP) CAS#:84-69-5	N.D.	50 mg/kg

测试样品/部位描述 Tested Sample/Part Description

- (1) 混测，带有银白色镀层的金属 Mixed test, metal with silver-white plating[#]
(2) 所有部件混测（非金属） Mixed test, all parts(Nonmetal)[#]

备注： 对于检测铅，镉，汞之样品已完全溶解。

-N.D. = 未检出 (小于方法检出限)

-mg/kg = ppm = 百万分之一

-阴性=不含有六价铬，即由样品所萃取出来的溶液中的六价铬的浓度小于
0.10 $\mu\text{g}/\text{cm}^2$

Remark: **The sample(s) had been dissolved totally tested for Lead, Cadmium, Mercury.**

-MDL = Method Detection Limit

-N.D. = Not Detected (<MDL)

-mg/kg = ppm = parts per million

-Negative = Absence of Cr (VI). The Cr (VI) concentration detected in the boiling water extraction solution is less than 0.10 $\mu\text{g}/\text{cm}^2$

-[#]The sample(s) was/were analyzed on behalf of the applicant as mixing sample in one testing. The above result(s) was/were only given as the informality value and only for reference.

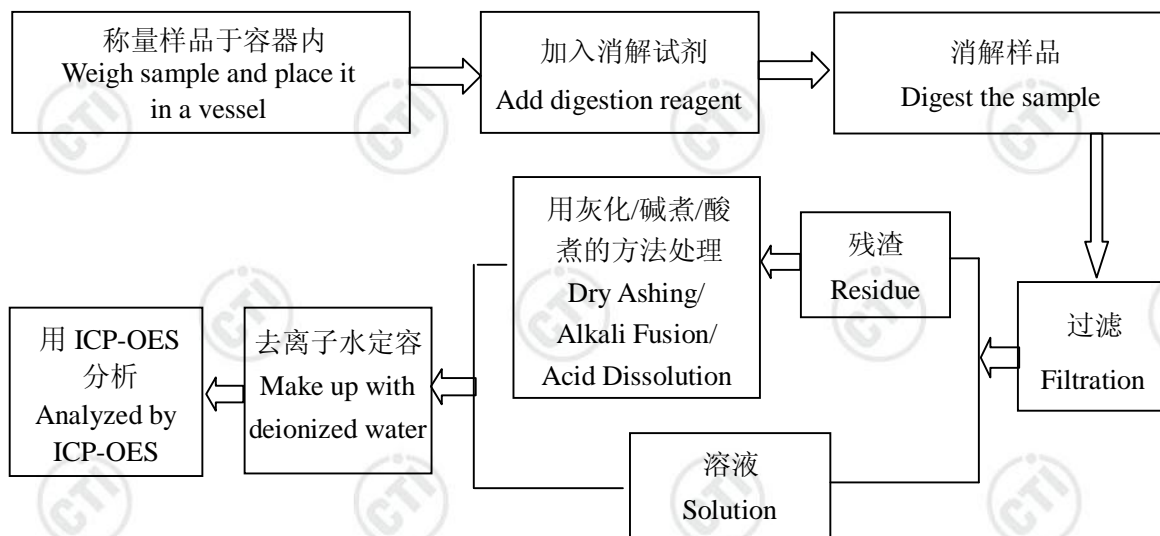
检测报告 Test Report

报告编号 SCL01I00495202E
Report No. SCL01I00495202E

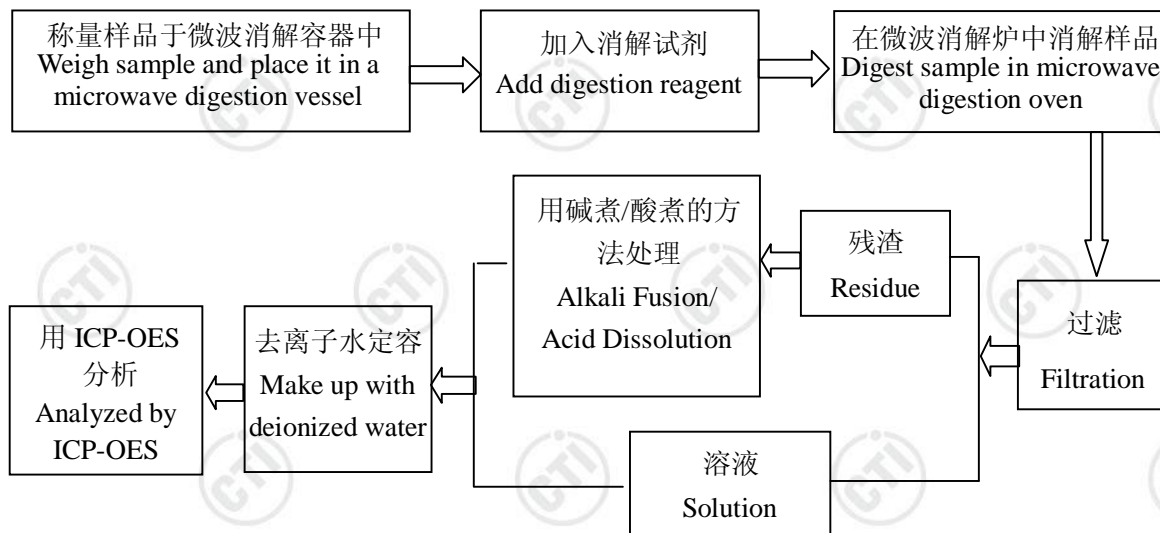
第 5 页 共 8 页
Page 5 of 8

检测流程 Test Process

1. 铅 Lead(Pb), 镉 Cadmium(Cd)



2. 汞 Mercury(Hg)



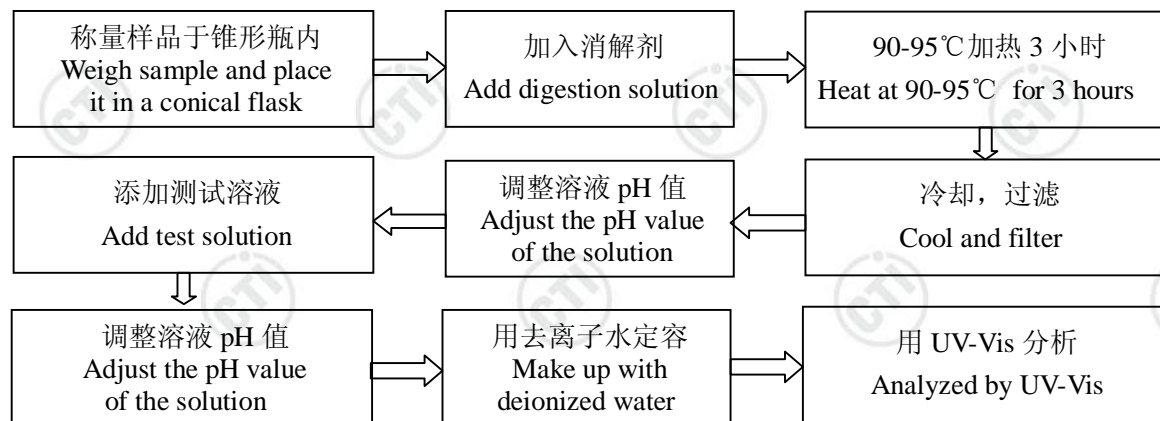
检测报告 Test Report

报告编号 SCL01I00495202E
Report No. SCL01I00495202E

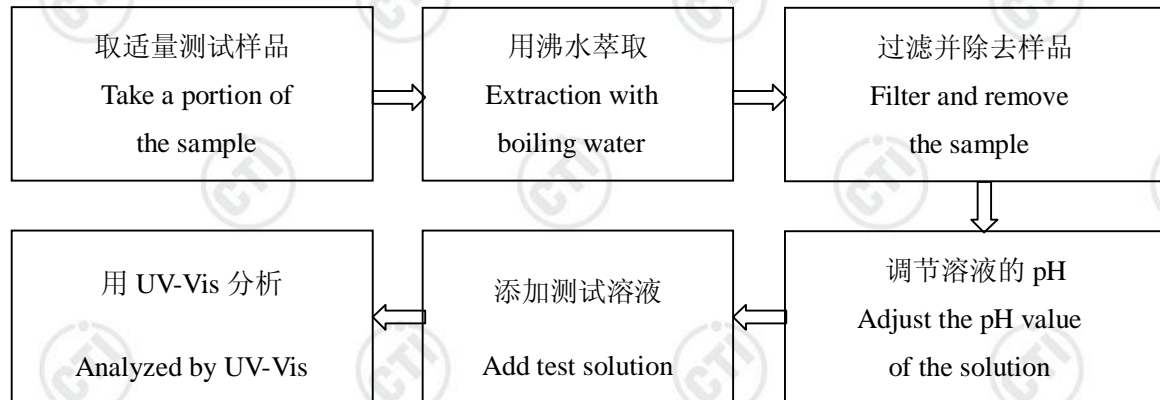
第 6 页 共 8 页
Page 6 of 8

3. 六价铬 Hexavalent Chromium (Cr(VI))

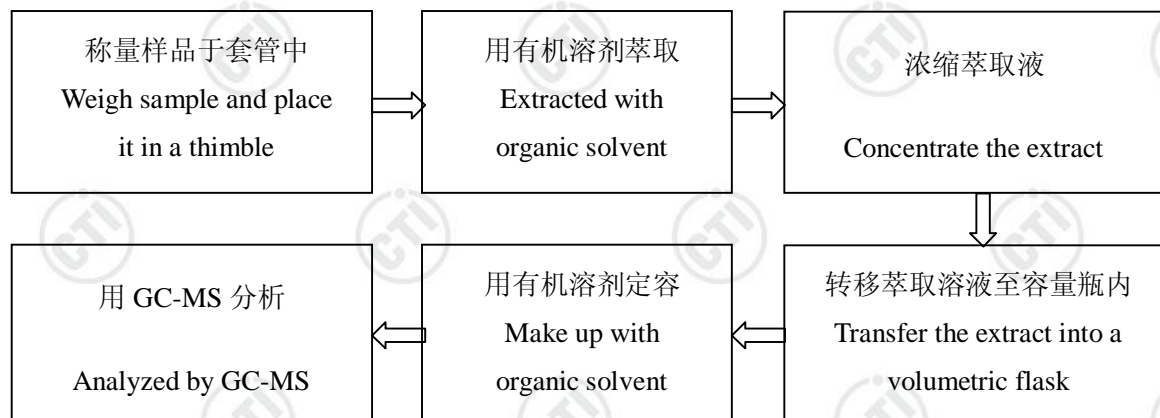
(1) IEC 62321:2008 Ed.1 Annex C



(2) IEC 62321-7-1:2015



4. 多溴联苯 Polybrominated Biphenyls(PBBs), 多溴二苯醚 Polybrominated Diphenyl Ethers(PBDEs)



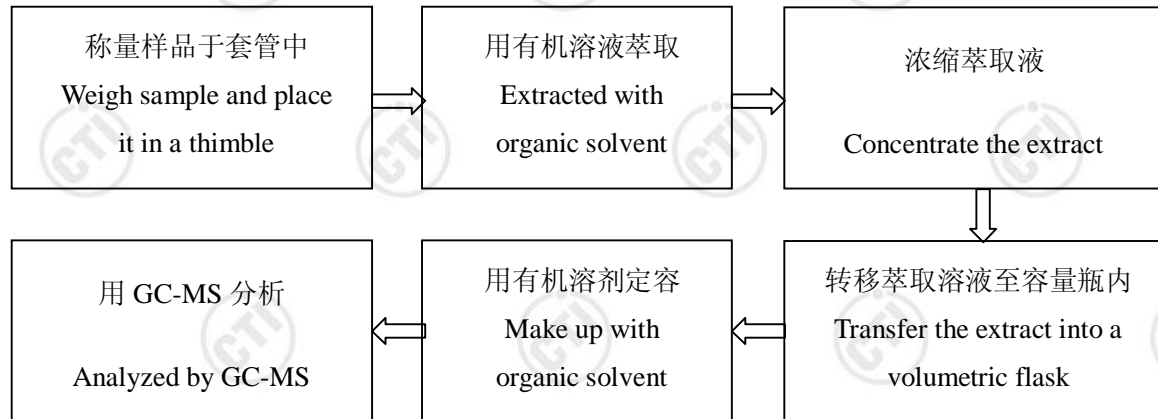
检测报告

Test Report

报告编号 SCL01I00495202E
Report No. SCL01I00495202E

第 7 页 共 8 页
Page 7 of 8

5. 邻苯二甲酸酯 Phthalates (DBP, BBP, DEHP, DIBP)



检测报告

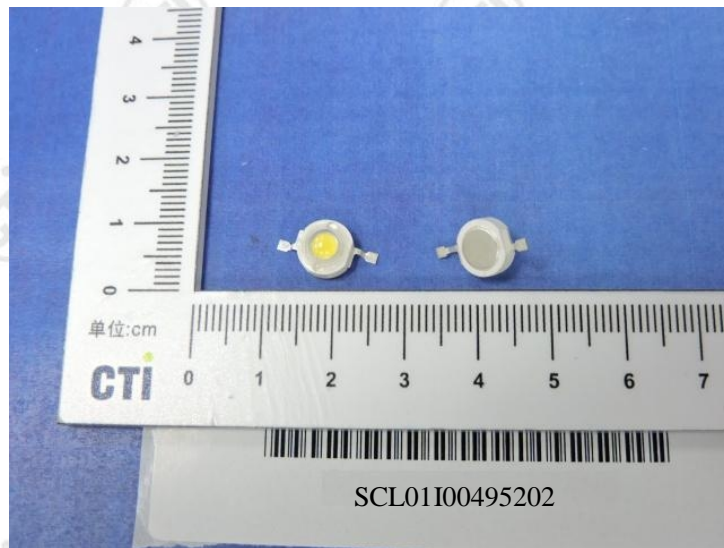
Test Report

报告编号 SCL01I00495202E
Report No. SCL01I00495202E

第 8 页 共 8 页
Page 8 of 8

样品图片

Photo(s) of the sample(s)



*** 报告结束 ***

*** End of Report ***

检测报告无批准人签字及“报告专用章”无效，本报告检测结果仅对受测样品负责。未经 CTI 书面同意，不得部分复制本报告。

The test report is effective only with both signature and specialized stamp. The result(s) shown in this report refer only to the sample(s) tested. Without written approval of CTI, this report can't be reproduced except in full.